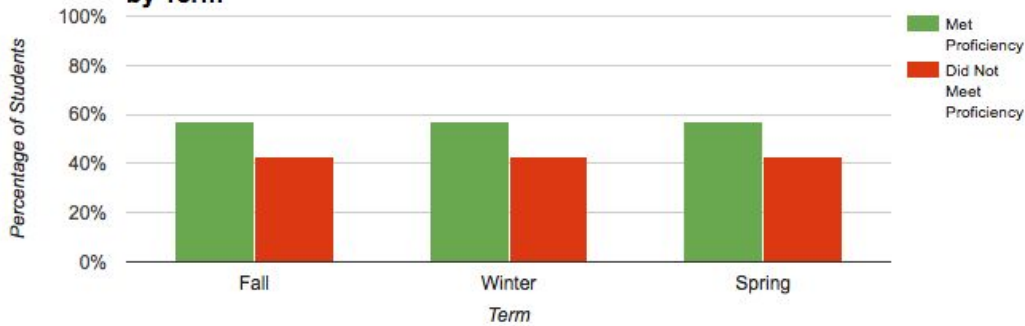


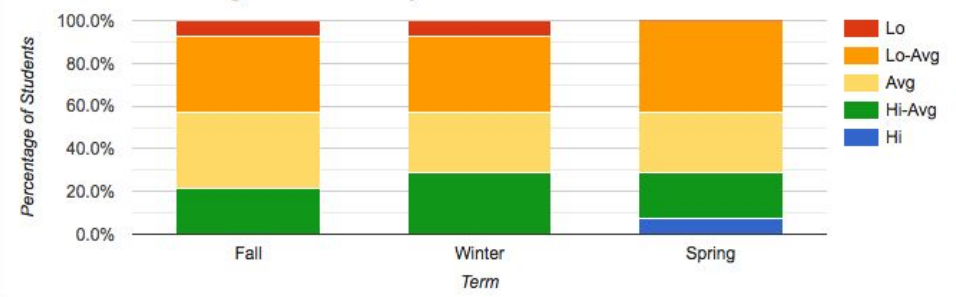
## Group Level Multi-Term

<b>Description</b>	Percentage of students achieving proficiency; Percentage of students by performance level; Mean score and scores by %ile
<b>Guiding Question(s)</b>	Is the group performing at, above, or below the expected level of performance? Is the group showing a positive trend in performance?
<b>Potential Use(s)</b>	Establish beginning of year baseline, set a goal, evaluate the extent to which a middle or end of year goal was met
<b>Assessment Name</b>	Interim / Benchmark Assessment (e.g. aimsweb, NWEA, Star)
<b>Subject</b>	Reading
<b>Year</b>	Current year

**Percentage of Students Who Met or Did Not Meet Proficiency by Term**

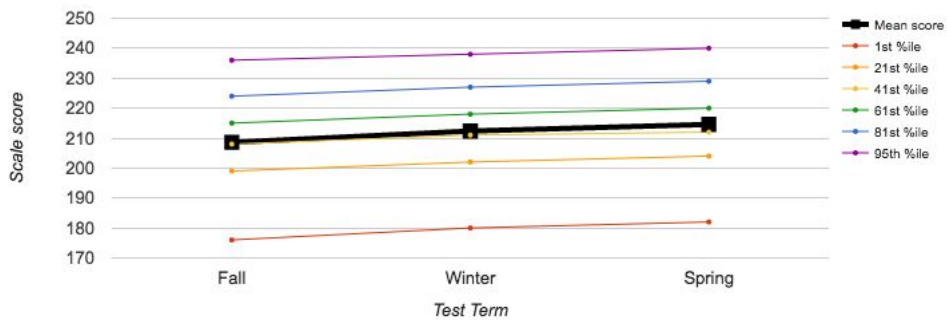


**Percentage of Students by Performance Level and Test Term**



	Fall #	Fall %	Winter #	Winter %	Spring #	Spring %
Low < 21st %ile	1	7.1%	1	7.1%	0	0.0%
Low-Avg 21st-40th %ile	5	35.7%	5	35.7%	6	42.9%
Avg 41st-60th %ile	5	35.7%	4	28.6%	4	28.6%
High-Avg 61st-80th %ile	3	21.4%	4	28.6%	3	21.4%
High > 81st %ile	0	0.0%	0	0.0%	1	7.1%

**Group Mean Score and Scores by Percentile by Test Term**



Low < 21st %ile
Low-Avg 21st-40th %ile
Avg 41st-60th %ile
High-Avg 61st-80th %ile
High > 81st %ile

	Mean score	1st %ile	21st %ile	41st %ile	61st %ile	81st %ile	95th %ile
Fall	209	176	199	208	215	224	236
Winter	212	180	202	211	218	227	238
Spring	215	182	204	212	220	229	240