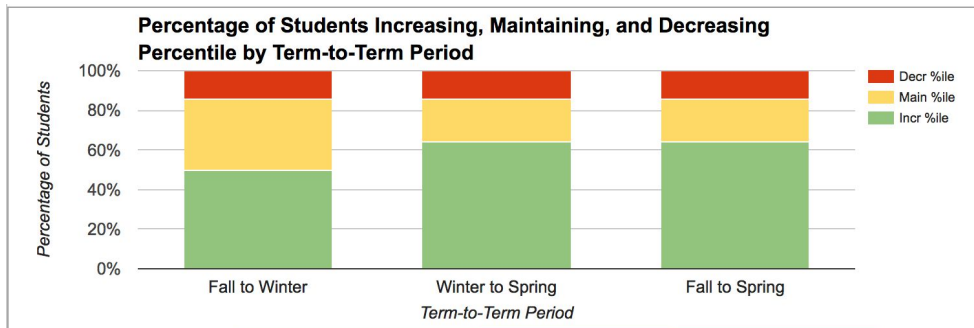
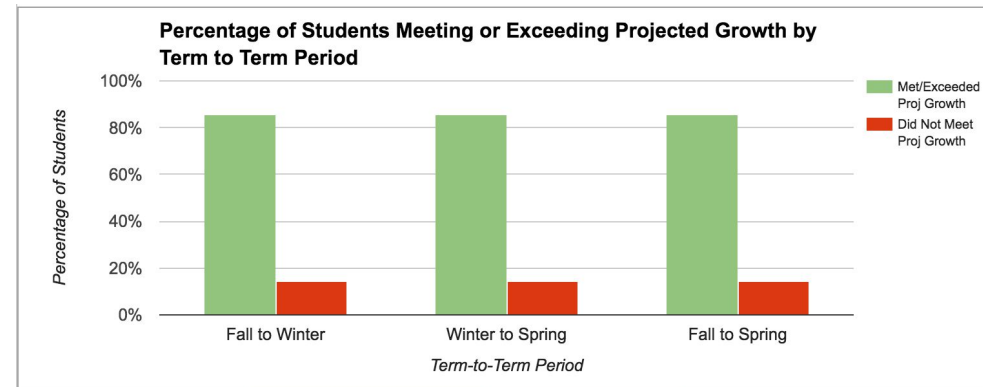


Group Level Multi-Term Growth

Description	Percentage of students increasing, maintaining, or decreasing percentile; Percentage of students achieving projected growth
Guiding Question(s)	Is the group performing at, above, or below the expected level of performance from one term to another?
Potential Use(s)	Evaluate whether there may be a need to make educational adjustments based on student growth from one term to another Evaluate the extent to which a group of students met a pre-defined goal to grow from one term to another
Assessment Name	Interim / Benchmark Assessment (e.g. aimsweb, NWEA, Star)
Subject	Reading
Year	Current year
Test Term(s)	Fall, Winter, Spring



	Increase %ile		Maintain %ile		Decrease %ile	
	#	%	#	%	#	%
Fall to Winter	7	50%	5	36%	2	14%
Winter to Spring	9	64%	3	21%	2	14%
Fall to Spring	9	64%	3	21%	2	14%



	Met/Exceeded Proj Growth		Did Not Meet Growth	
	#	%	#	%
Fall to Winter	12	86%	2	14%
Winter to Spring	12	86%	2	14%
Fall to Spring	12	86%	2	14%