

Group Level Multi-Term Growth

Description Percentage of students increasing, maintaining, or decreasing percentile; Percentage of students achieving projected growth

Guiding Question Is the group performing at, above, or below the expected level of performance from one term to another?

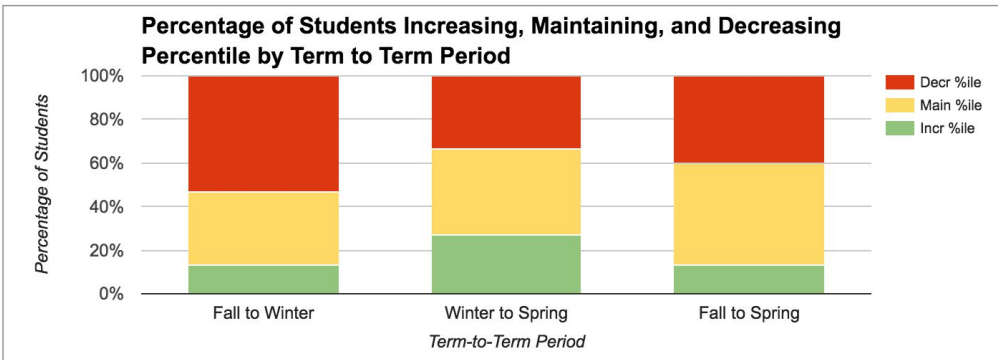
Potential Use(s) Evaluate whether there may be a need to make educational adjustments based on student growth from one term to another
Evaluate the extent to which a group of students met a pre-defined goal to grow from one term to another

Assessment Name Interim / Benchmark Assessment (e.g. aimsweb, NWEA, Star)

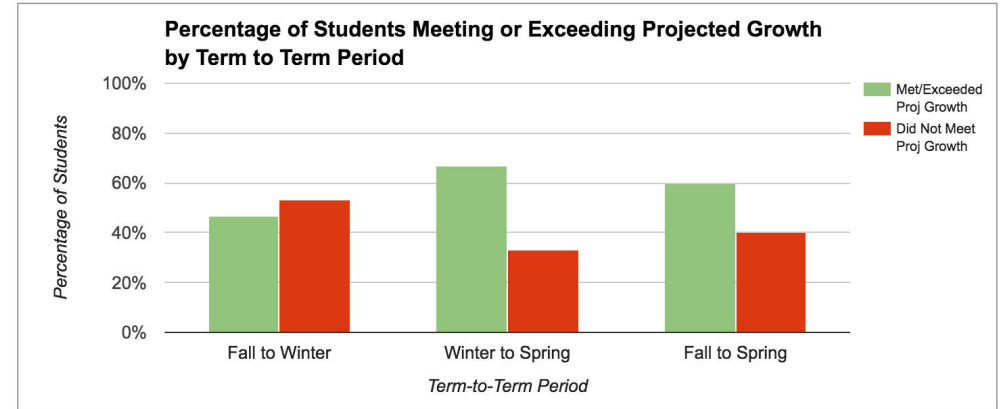
Subject Reading

Year Prior year

Test Term(s) Fall, Winter, Spring



| | Increase %ile | | Maintain %ile | | Decrease %ile | |
|------------------|---------------|-----|---------------|-----|---------------|-----|
| | # | % | # | % | # | % |
| Fall to Winter | 2 | 13% | 5 | 33% | 8 | 53% |
| Winter to Spring | 4 | 27% | 6 | 40% | 5 | 33% |
| Fall to Spring | 2 | 13% | 7 | 47% | 6 | 40% |



| | Met/Exceeded Proj Growth | | Did Not Meet Growth | |
|------------------|--------------------------|-----|---------------------|-----|
| | # | % | # | % |
| Fall to Winter | 7 | 47% | 8 | 53% |
| Winter to Spring | 10 | 67% | 5 | 33% |
| Fall to Spring | 9 | 60% | 6 | 40% |